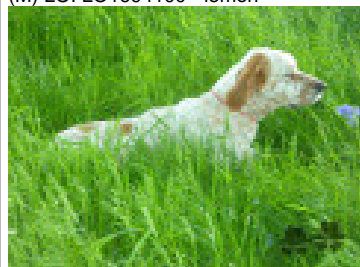


Père
MISTRAL DELL'ABAZIA 2016-04-06
 (M) LOI LO1694100 - lemon



OSCAR DI VAL DI CHIANA 2005-01-02
 (M) LOI LO0595485 (Ch GQ) - bluebelton



AZOR 2001-03-29 (M) LOI
 LO01115312 (Ch GQ) - bluebelton



NEVE 2000-01-01 (F) LOI LO0060728
 - lemon

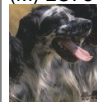
MUR DELL'ABAZIA 2003-08-10 (M)
 LOI LO047122 (Camp. Ital. Lav.) - tricolore



LULA DELL'ABAZIA 2011-04-20 (F)
 LOI LO11108227 - bluebelton

YURY DELL'ABAZIA 2006-05-05 (F)
 LOI LO0735229 - lemon

GUFO DI VAL DI CHIANA 1994-04-01
 (M) LOI 514177 (Ch GQ) - bluebelton



CLORIS 1996-10-15 (F) LOI ST553291
 - bluebelton

BREAK 1996-12-03 (M) LOI 553198
 (Trialer GQ) - bluebelton

FENNY 1997-01-04 (F) LOI ST557872 -
 tricolore

FIERO 1996-08-10 (M) LOI 551356 (Ch
 ITF, Ch IB, Ch ITT) - lemon



PUNIEGGI DELL'ABAZIA 1997-06-23
 (F) LOI LO98109146 - tricolore

KAPO 2003-11-10 (M) LOI LO0439835
 (Ch IT GQ) - bluebelton



ASIA 2000-10-23 (F) LOI LO0180242 -
 lemon

KAPO 2003-11-10 (M) LOI LO0439835
 (Ch IT GQ) - bluebelton



NERO 1997-03-29 (M) LOI LO9817889
 (Ch T, Ch GQ) - bluebelton



KYBA 1998-01-01 (F) LOI LO98118951
 - lemon

ARTU DI ALDO DA SARNO
 2006-01-02 (M) LOI LO0666968 (Ch GQ)
 - tricolore



AMY 2002-08-10 (F) LOI LO02143515 -
 tricolore

VEGA 2005-11-14 (M) LOI LO0669697
 (Ch GQ) - lemon



HONDA DI VAL DI CHIANA 2004-06-27
 (F) LOI LO04121657 - tricolore

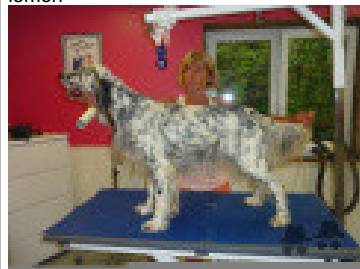
SANDOCAN DI VAL DI CHIANA
 2008-02-02 (M) LOF 202677/37343 (TR)
 - bluebelton



OFELIA DI VAL DI CHIANA 2010-03-17
 (F) LOI LO01092073 - lemon



Mère
MADDY DE LA FOUGERE AIGLE
 2016-07-02 (F) LOF 247354/49762 -
 lemon



NATAN 2012-10-03 (M) LOI
 LO12157969 (CH IT GQ, Camp. Tr.) -
 bluebelton



QUATTA 2009-06-11 (F) LOI
 LO1085288 - tricolore



EGIDIO DI VAL DI CHIANA 2009-07-07
 (M) LOI LO01060023 (TR) - bluebelton



JULIE DE LA FOUGERE AIGLE
 2014-06-24 (F) LOF 235334/46878 (TR)
 - lemon



GIWAN DE LA FOUGERE AIGLE
 2011-06-25 (F) LOF 217188/43461 -
 bluebelton



Sang italien (estimation) : 100 %
Estimation des points au pédigrée : 23

Taux de consanguinité (estimation) : 7.4 %

KAPO (4 X 3,5,6) : 0.021484
GUFO DI VAL DI CHIANA (4,5,6,7,7 X 5,6,7,7,7,8,8,8,8) : 0.017578
OSCAR DI VAL DI CHIANA (2 X 5) : 0.017075
NEGUS (5,6,6,6,6,7,7,8,8 X 6,6,7,7,8,8,8,8) : 0.010742
NORD DI VAL DI CHIANA (5,5 X 7,8,8) : 0.001709
NERO (5 X 4,6,6,7,7) : 0.001465
NOAH DEL DIANELLA (6,7 X 6,8) : 0.000763
DECOR LOT (7,7,7,8,8 X 7,8) : 0.000671
LEM DEL DIANELLA (6,7,7,7,7,8,8,8 X 7,7,8,8) : 0.000549
FRANCINI'S ODETTE (6 X 7,8) : 0.000366
FRANCINI'S ASTON (6 X 7) : 0.000244
LEM DEL RESEGONE (8,8,8,8 X 7,8) : 0.000244
OLAF DEI TRE PONTI (7,8 X 7,8) : 0.000153
ROYAL MOZART (6 X 8) : 0.000122
VANGOGH DELL'AD MONTES (6 X 5,7,8,8) : 0.000122
ALA (6,7,8,8 X 7,8) : 0.000092
FRANCINI'S ASTON 1 (6,7,8,8 X 7,8) : 0.000092
DUN DEL MESCHIO (8,8,8 X 8) : 0.000092
MERA DELL'ORSONE (8,8 X 7) : 0.000061
FRANCINI'S RAS (7,8 X 8) : 0.000031
FRANCINI'S VANITY (8 X 8) : 0.000031
RUSTY DEL DIANELLA (8 X 8,8) : 0.000031

